

# COVID-19 RESPONSE

**ESPACE GRIS**

STUDIOS | MONTREAL

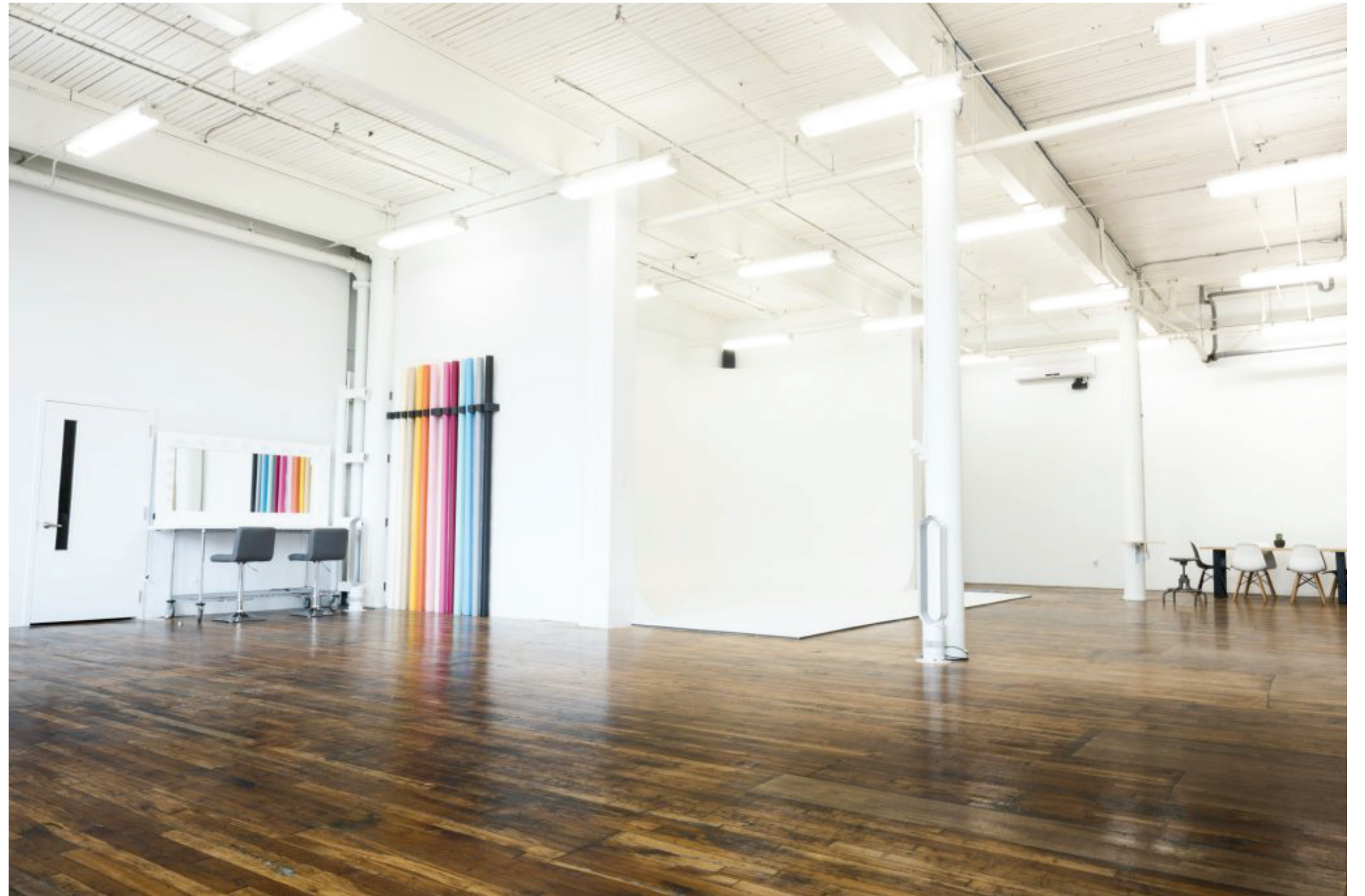


Our studio's first and most important priority is the welfare and security of our clients and staff.

We understand that this can be a difficult time for many, and we are dedicated to making your stay with us as secure and comfortable as possible in order for you to focus on creating. With that said, to ensure our procedures are up to date we are continuously updating and following the recommendations set by the Government of Quebec and World Health Organization.

**NASKADEMINI**  
Founder

「Studio Espace Gris is committed to facilitating your experience during these are unprecedented times by being understanding and attentive of each client's situation and needs, and adapting accordingly.」



# SAFETY PROTOCOL

「As we go through this new normal together, we are committed to following all Local, and Provincial Government guidelines on developing our Infectious Disease Prevention and Response Plan for controlling COVID-19.」

**「SAFETY MEASURES」**

# *Below are some of the measures we have implemented to help you get back to doing what you love all while staying safe.*



Various posters have been put on display inside and outside the studio to offer clients reminders on wearing a mask, physical distancing & hand washing/sanitizing.



A sign-in sheet has been added as a tracking measure to enable our team to contact you in case of an outbreak.



Face masks are mandatory. Custom Studio Espace Gris masks are available through our website's equipment list, as well as on-site purchase.



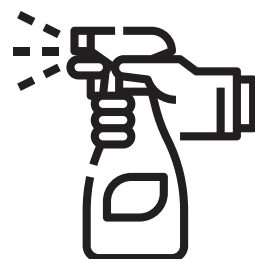
We are staggering shifts to limit the number of staff within the studio at a time.



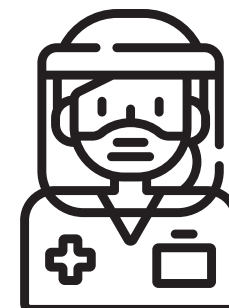
Upon entry of the studio, a touchless hand sanitizing dispenser has been put in place for frequent cleansing before, during and after rental.



Any packages or items that are delivered to the studio will be accepted outside the main entrance by our staff, who will place them in a dedicated drop off zone inside the equipment room to be disinfected before being delivered to production.



Sanitizing and disinfecting all high touch surfaces, including the bathroom, light switches, all door handles, kitchen & equipment has increased to prevent the spread of COVID-19. All studio surfaces and equipment are aggressively sanitized before and immediately after every rental.



PPE Will be available at the studio in case somebody within your crew forgets theirs.



# 「STUDIO SPEC SHEET」



### **Features:**

- Restaurant Mckiernan (Mon-fri) Same floor
- Original Hardwood Flooring
- Bathroom w/Shower
- Kitchenette w/Fridge
- Nepresso Machine ( Pods not incl)
- Microwave
- Fibe Wifi
- Lounge Area
- Work Area with Desk (6)
- Make-up/Hairstyling Station
- Heavy duty Steamer
- 2 Heavy Duty Wardrobe Racks
- Sonos Sound System (bluetooth)
- Valet Parking
- Same floor Loading Dock
- Air Conditioning
- USB Charging Station



# THE FLOOR PLAN

-3300 sq ft

-24' x 12' 180° Cyclorama

-16' White Ceilings

-9' Seamless Wall Mounted

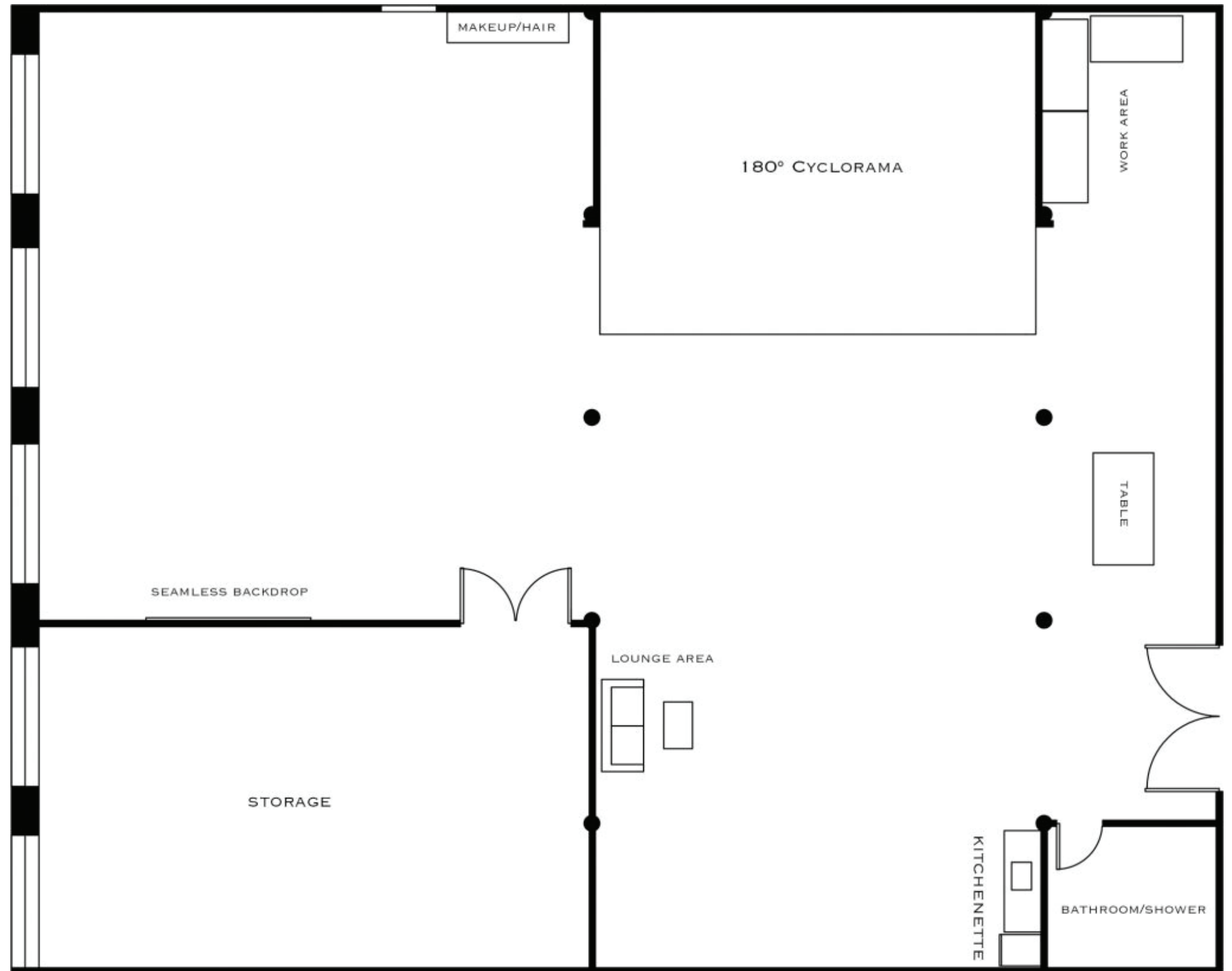
-Backdrop System

-3 North Facing Windows

-11'( Natural Light)

-Blackout Curtains (Doubled)

-Some Exposed White Brick





**Thank you for your understanding and support.  
We are looking forward to welcoming you back  
to create in our studio with confidence!**

**ESPACE GRIS**  
STUDIOS | MONTREAL